

## “HIK Made Easy”

### Jaycar QV3044/45, 8 and 16 channel DVR machines. 20/08/09

The following notes and hints are a supplement to the handbooks, do not replace anything in the handbooks, but are just responses to the typical phone queries by users doing a first run up and having problems. First time users, please have a read of this before proceeding. For in depth directions covering any aspect of operation please read the handbooks.

This machine has an operating system a little different to anything we have previously sold. Once users get familiar with the screens and methods of operation it is straightforward.

This machine is a really serious piece of equipment intended for high end users as a multiple camera network device and intended to be racked up in a secure area and operated remotely by multiple users on the network. I do not view this machine as being the best fit for a home application or non network use. For these applications please use a simpler lower cost type DVR.

IT and PC people will feel most at home in the first instance as the machine is rather PC like. It has control access via either a mouse, front panel control and hand remote for setting up, and, control and operation via the network.

USE THE MOUSE while setting up and viewed by a local monitor, as the mouse has direct access to a handy sub menu (by right click) with the common set up and user features, once installed the machine is then operated via the network software, not necessarily by the front panel controls.

#### Some important things to remember when first powering up:

1/ There is a **power switch** on the rear panel.

If the machine is dead and wont power up by the front panel button after you plug in, make sure the rear switch is “ON”! Make sure a composite signal PAL or NTSC monitor is connected to the main video monitor output connector on the rear of the DVR.

Do not attempt to boot this machine up blind with no monitor and expect to operate and set up the machine via a network connection. (some people expect this to work!)

With power applied, lights will come on and the machine will commence to boot.

2/ The machine will first show a large icon screen with words like “ADVANCED - H 269- DVR DVS. Then icons will be displayed on your video monitor with red ticks or crosses indicating the operating system finds the presence of “chips” and “hard drive” devices. A tick showing on the hard drives symbols does NOT mean they are formatted, just that they are there.

Next the screen will show 8 or 16 channel camera boxes depending on model. The screen resolution of all images will be poor at this stage. Do not worry, various settings will improve this as you set the machine up.

As well the machine may **beep continually**. That’s the machine reporting to any unset condition. This indicates its not quite ready to go to work until some set up is done, NOT that the machine is “faulty”!!.

3/ These machines will NOT record anything and will not accept a “REC” command, unless the hard drives are **FORMATTED**.

Work out how to enter ‘MENU’ and navigate (the mouse may be the easiest tool to use first) to the “utilities”, select the icon and select format. The hard drives detected and size will be displayed at that screen.

Select FORMAT and format the hard drives. This will take up to 10 minutes.

4/ If the **beeping continues** and it drives you crazy, navigate to the “EXCEPTIONS” icon and work out how to turn off ALL exceptions. The beeping will shut up. Reinstate exceptions last when you understand which ones are required for the installation.

5/ If the **screen view** has been lousy up to this point, then look at the screen settings in menu and pick a finer resolution. The screen appearance will improve. Do not worry about how the monitor screen images or the menu images look at this point. So long as you can see them that’s good

enough. Once you learn a bit more about the machine, settings will vastly improve the screen appearances after re booting. This machine is capable of SUPERB replay and network images once set up.

6/ You may turn off the **password** to allow easier navigating via the front panel buttons during set up. DO NOT forget to turn the password BACK ON before leaving the machine on this first run up, or turning it off. .

As well, if the default 12345 password or ADMIN user names are changed DO NOT EVER forget what the new settings are. This is a serious surveillance DVR and cannot easily be hacked to rescue the user or password setting.

There is no quick “push 2 buttons” or “sys reset” pins available. Rescue will involve contacting the manufacture and following a lengthy software rescue procedure with the machine on line in a network connection. ( I have done this procedure and validated it).

7/ To **record**, set the camera page up in menu and green light the channels required, or, select all.

With machines that have the mouse right click pop up “sub menu”, the mouse is the quickest way to do a first set up.

On the monitor screen down the bottom, there are “traffic light” coloured dots showing channel status. Green and pink lamps indicate the channel is on manual record AND it is recording. You will also see the HDD front panel light blinking from time to time indicating something is happening.

Set up a recording schedule if you want the machine to boot up from restart automatically in record mode, if left in plain “manual” record mode, auto record will not happen.

8/ Check record and playback work ok by following the dead easy menus.

Once having stored some files you may then try a **“backup”** to disc to prove the procedure. I had no luck with my brand of DVD-RW discs but worked ok with my brand of DVD+RW. Other users have no problem with DVD-RW or DVD-R, so all brands are not the same! When you burn a disc file you get the player burnt on disc as well. The disc can be walked to a Windows PC, I use all XP Pro machines, and the **file played** by following the prompts.

7/ **Handbooks** are on the disc supplied.

BUT, the software handbook is IMBEDDED in the installed application, NOT a separate file on the main disc. Install the application and then download the handbook.

8/ To **network the machine** on a LAN, go and familiarise yourself with the manual please.

Briefly, install and run the software on your PC.

During the installation make absolutely sure you fill in the User/Company and Login registration blocks with details, DO NOT jump over them. Also, DO NOT forget what the details were or the software will not let you log on the next time! Windows may halt the install with a security warning at some point, choose “unblock” to proceed.

Take note of “right click” functions!!

With the program running select the “configure” mode button.

Then create a node area, Hint: Right click the blank left area. Name the area.

Then create a device. Hint: Right click, select create a device!

Then in the SAPD config box for that device, **at the minimum** put in:

a/ a name of the **area** (like “office”),

b/ the **IP address** that you set the machine to,(go to the IP setup in the DVR menu and set up an address to match the properties of the network , like 010.000.000.010 in a simple net),

c/ the **user** name (default is “admin”)

d/ the **DVR password** (such as 12345), make sure the DVR has a password SET and turned ON, or the net connection will NEVER work trust me!

e/ the **number** of channels.

The SAPD config box has a button called “show on-line devices”. Click that and if your net work cables and IP are correct, the machine will be listed by name rank and serial number and you can select it. If the machine is listed you are ready to rock and roll. This works with both one to one cable links and network connections.

By selecting a camera you can then see that channel in the “preview” screen and you can record live and stills and playback selected files. A connection can be done in minutes from a new machine once you get the procedure down pat.

The above notes on network connection are a skeleton guide only and hitting the high spots. Please read the handbook to familiarise yourself with the screens and operation in detail. For internet and complex network connections, go see the IT guy in the building or a PC network expert, don’t ask me.

#### 9/ Using **the mouse**.

Plug it into the port behind the flap on the machine front. Use it like a mouse, no set up needed, no batteries. Remember to right click for selections.

#### 10/ **The remote**.

This needs the batteries in it (yes!) and logging on to the machine. Note: in default condition press “DEV”, press 88, press return. The light will come on the DVR front panel. If not used for a while you may need to log on again.

#### 11/ Turning the **DVR off**.

USE THE SHUTDOWN procedure, DO NOT flip the power switch off. You don’t pull the plug on your PC, don’t do it to this DVR!

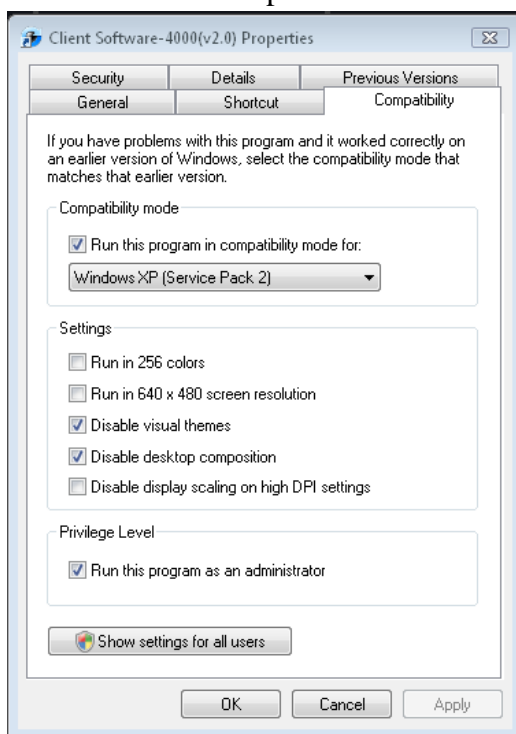
It is good practice that any serious on line surveillance recorder such as this is run via a proper sine wave UNINTERRUPTABLE POWER SUPPLY sized to provide normal running for the time required.

12/ Windows Vista operation. If there is difficulty with the software and the log in names being rejected make sure you are running the Vista session in “Administrator” mode.

13/ Windows settings, the following info are suggestions for WinXPSP2 settings which gave best results. Below is a screenshot of recommended “Optimal” Vista compatibility settings.

Note: It is not always necessary to have all of these settings. These are accessible by right clicking the shortcut and going to properties... then the compatibility tab as seen below.

- 1) WinXP SP2 mode is optional and just a precaution.
- 2) Disable visual themes is useful when artifacts appear on the top bar of the client software and its windows.
- 3) Disable desktop composition will fix overlay problems... i.e. where a channel goes “black” or generally fails to preview.
- 4) Administrator mode will fix problems with the username / password.



**End of hints 20/08/09.**

